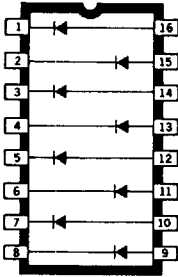


# SERIES TND

T-43-24

## DIODE ARRAYS

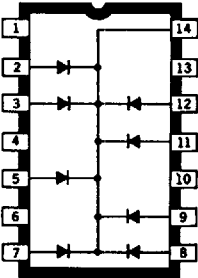


Dwg No A-10,903

**TND903**  
**TND907**  
**TND908**  
**TND918**  
**TND921**

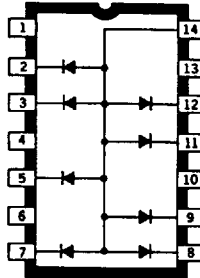
The TND series consists of diode arrays packaged in 14-pin and 16-pin dual in-line plastic packages for easy automatic insertion and better printed circuit board density.

In addition to the diode characteristics for standard products shown here, arrays consisting of diodes with 1N3070, 1N3595, 1N3600, 1N4153, or 1N4447 characteristics can be furnished on request. Other package configurations are available on special order.



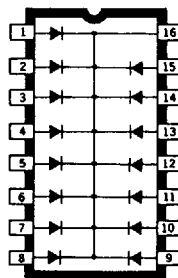
Dwg No A-13,359

**TND933**  
**TND940**



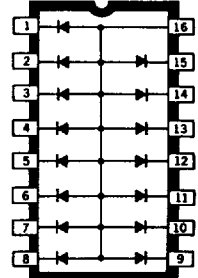
Dwg No A-13,360

**TND938**  
**TND939**



Dwg No A-10,901

**TND905**



Dwg No A-13,361

**TND942**

### ELECTRICAL CHARACTERISTICS at $T_A = +25^\circ\text{C}$

| Device Type | $V_{BR}$ Min. (V) | $V_F$    |              | $I_R$     |             | Device Type | $V_{BR}$ Min. (V) | $V_F$    |              | $I_R$     |             |
|-------------|-------------------|----------|--------------|-----------|-------------|-------------|-------------------|----------|--------------|-----------|-------------|
|             |                   | Max. (V) | @ $I_F$ (mA) | Max. (nA) | @ $V_R$ (V) |             |                   | Max. (V) | @ $I_F$ (mA) | Max. (nA) | @ $V_V$ (V) |
| TND903      | 75                | 1.0      | 100          | —         | —           | TND933      | 60                | 1.0      | 100          | 100       | 40          |
| TND905      | 100               | 1.0      | 10           | —         | —           | TND938      | 60                | 1.0      | 100          | 100       | 40          |
| TND907      | 120               | 1.0      | 100          | 10        | 50          | TND939      | 40                | 1.0      | 100          | 100       | 25          |
| TND908      | 100               | 1.0      | 10           | —         | —           | TND940      | 40                | 1.0      | 100          | 100       | 25          |
| TND918      | 75                | 1.0      | 50           | —         | —           | TND942      | 75                | 1.0      | 100          | 100       | 25          |
| TND921      | 75                | 1.0*     | 10           | —         | —           |             |                   |          |              |           |             |

\* All diodes matched to within  $\pm 15$  mV at  $I_F = 10$  mA.